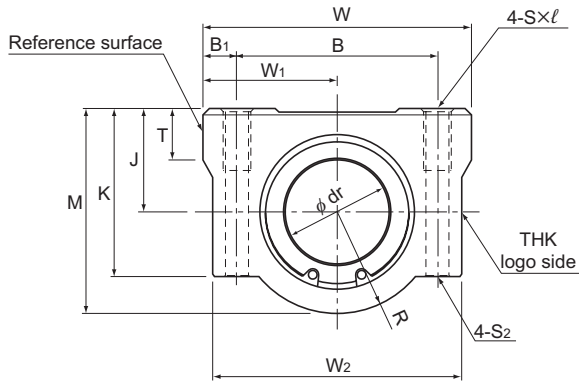


Models SC6 to 30



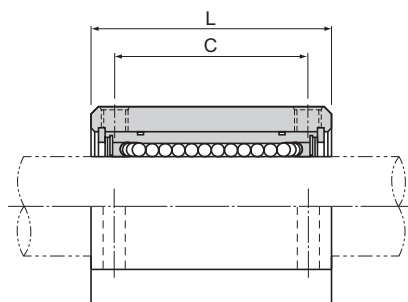
Models SC6 to 30

Model No.	Outer dimensions			LM casing dimensions						
	Height M	Width W	Length L	Mounting hole position			Tap S × l	Through bolt model No., S ₂	Center height J ±0.02	W ₁ ±0.02
				B	B ₁	C				
SC 6UU	18	30	25	20	5	15	M4 × 8	M3	9	15
SC 8UU	22	34	30	24	5	18	M4 × 8	M3	11	17
SC 10UU	26	40	35	28	6	21	M5 × 12	M4	13	20
SC 12UU	29	42	36	30.5	5.75	26	M5 × 12	M4	15	21
SC 13UU	30	44	39	33	5.5	26	M5 × 12	M4	15	22
SC 16UU	38.5	50	44	36	7	34	M5 × 12	M4	19	25
SC 20UU	42	54	50	40	7	40	M6 × 12	M5	21	27
SC 25UU	51.5	76	67	54	11	50	M8 × 18	M6	26	38
SC 30UU	59.5	78	72	58	10	58	M8 × 18	M6	30	39

Notes: Since this model contains a synthetic resin retainer, do not use it at temperatures exceeding 80°C.
A highly corrosion resistant stainless steel Linear Bushing Model LM-MG can also be incorporated at your request.

Example of Model Numbers for Use in Combination with
Linear Bushing Units

Linear bushing to be combined	Example of model No.	
With seals on both ends	SC 13UU	Standard stock
Without seals	SC 13	Made to order
Made of stainless steel with seals on both ends	SC 13MUU	Made to order

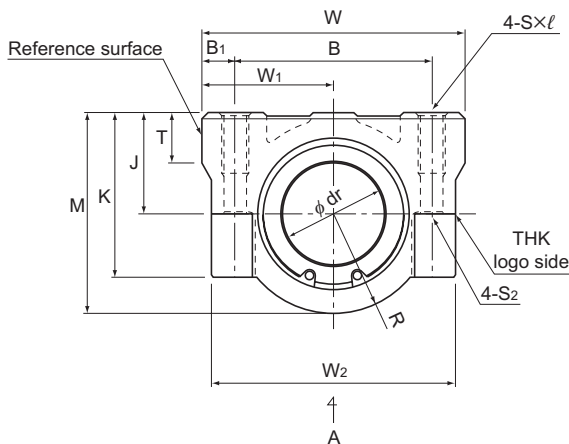


Unit: mm

							Model No. of linear bushing to be combined	Basic load rating		Unit mass g
					Inscribed circle diameter			C	C ₀	
K	W ₂	T	R	dr	Tolerance			N	N	
15	28	6	9	6	0 -0.009		LM6UU	206	265	34
18	32	6	11	8			LM8UU	265	402	52
22	37	8	13	10			LM10UU	373	549	92
25	39	8	14	12			LM12UU	412	598	102
26	41	8	15	13			LM13UU	510	775	123
35	46	9	19.5	16			LM16UU	775	1,180	189
36	52	11	21	20	0 -0.010		LM20UU	863	1,370	237
41	68	12	25.5	25			LM25UU	980	1,570	555
49	72	15	29.5	30			LM30UU	1,570	2,750	685

Note: If a lubrication hole is required, this can be indicated by appending "OH" to the end of the model number.
For further information, contact THK.

Models SC35 to 50



Models SC35 to 50

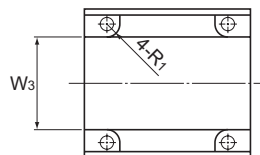
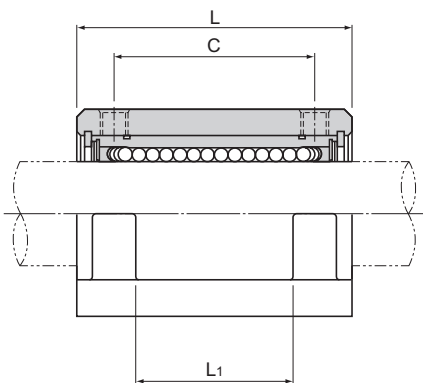
Model No.	Outer dimensions			LM casing dimensions							
	Height M	Width W	Length L	Mounting hole position			Tap S×ℓ	Through bolt model No., S ₂	Center height J ±0.02	W ₁ ±0.02	K
				B	B ₁	C					
SC 35UU	68	90	80	70	10	60	M8×18	M6	34	45	54
SC 40UU	78	102	90	80	11	60	M10×25	M8	40	51	62
SC 50UU	102	122	110	100	11	80	M10×25	M8	52	61	80

Notes: Since this model contains a synthetic resin retainer, do not use it at temperatures exceeding 80°C.

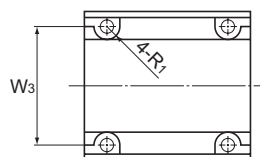
A highly corrosion resistant stainless steel Linear Bushing Model LM-MG can also be incorporated at your request.
(Model SC50 does not include a stainless type.)

Example of Model Numbers for Use in Combination with
Linear Bushing Units

Linear bushing to be combined	Example of model No.	
With seals on both ends	SC 40UU	Standard stock
Without seals	SC 40	Made to order
Made of stainless steel with seals on both ends	SC 40MUU	Made to order



View A Model SC35



View A Model SC40 and Model SC60

Unit: mm

	W ₂	W ₃	L ₁	T	R	R ₁	Inscribed circle diameter		Model No. of linear bushing to be combined	Basic load rating		Unit mass
							dr	Tolerance		C	C ₀	
										N	N	g
	85	60	42	18	34	5	35	0	LM35UU	1,670	3,140	1,167
	96	80	44	20	38	8	40	-0.012	LM40UU	2,160	4,020	1,697
	116	100	64	25	50	8	50		LM50UU	3,820	7,940	3,632

Note: If a lubrication hole is required, this can be indicated by appending "OH" to the end of the model number.
For further information, contact THK.