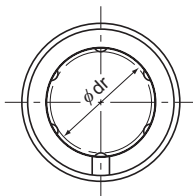


Model LM-L



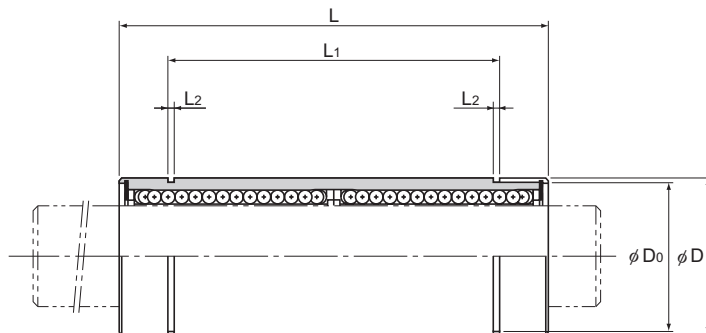
Model LM-L

Model No.	Ball rows	Main dimensions					
		Inscribed circle diameter		Outer diameter		Length	
		dr	Tolerance	D	Tolerance	L	Tolerance
LM 3L	4	3	0 -0.010	7	0 -0.013	19	0 -0.3
LM 4L	4	4		8		23	
LM 5L	4	5		10		29	
LM 6L	4	6		12		35	
LM 8L	4	8		15		45	
LM 10L	4	10		19	55		
LM 12L	4	12		21	0 -0.016	57	
LM 13L	4	13		23	61		
LM 16L	5	16		28	70		
LM 20L	5	20		32	80		
LM 25L	6	25	0 -0.012	40	0 -0.019	112	0 -0.4
LM 30L	6	30	45	123			
LM 35NL	6	35	52	135			
LM 40NL	6	40	0 -0.015	60	0 -0.022	151	
LM 50NL	6	50	80	192			
LM 60NL	6	60	0 -0.020	90	0 -0.025	209	

Notes: Since this model contains a synthetic resin retainer, do not use it at temperatures exceeding 80°C.
If requiring a type equipped with a seal, indicate it when placing an order.

(Example) LM13L UU

└─── Seal attached on both ends of the nut



Unit: mm

	L ₁	Tolerance	L ₂	D ₀	Eccentricity (max) μm	Basic load rating		Mass g	
						C N	C ₀ N		
	—	—	—	—	10	139	216	3	
	—		—	—	—	10	139	254	4
	20	0 -0.3	1.1	9.6	10	263	412	10	
	27		1.1	11.5	15	324	529	15	
	35		1.1	14.3	15	431	784	26	
	44		1.3	18	15	588	1,100	48	
	46		1.3	20	15	657	1,200	56	
	46		1.3	22	15	814	1,570	75	
	53		1.6	27	15	1,230	2,350	147	
	61		1.6	30.5	20	1,400	2,750	163	
	82		0 -0.4	1.85	38	20	1,560	3,140	397
	89			1.85	43	20	2,490	5,490	434
	99	2.1		49	25	2,650	6,270	795	
	121	2.1		57	25	3,430	8,040	1,170	
	148	2.6		76.5	25	6,080	15,900	3,100	
	170	3.15		86.5	25	7,550	20,000	3,500	

Notes: A stainless steel type (LM3ML to 20ML) is also available. Contact THK for details.

If a lubrication hole is required, this can be indicated by appending "OH" to the end of the model number.

For further information, contact THK.