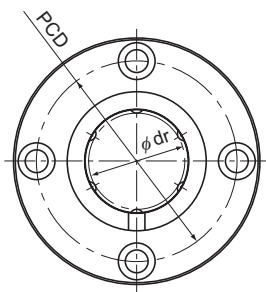


Model LMF-ML (Stainless Steel Type)



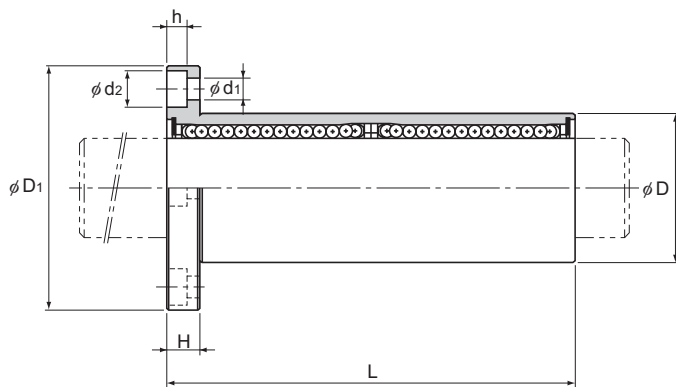
Model LMF-ML

Model No.	Ball rows	Main dimensions							
		Inscribed circle diameter		Outer diameter		Length		Flange diameter	
		dr	Tolerance	D	Tolerance	L	Tolerance	D ₁	Tolerance
LMF 6ML	4	6	0 -0.010	12	0	35	0 -0.3	28	0 -0.2
LMF 8ML	4	8		15	-0.013	45		32	
LMF 10ML	4	10		19	0 -0.016	55		39	
LMF 12ML	4	12		21		57		42	
LMF 13ML	4	13		23		61		43	
LMF 16ML	5	16	28	70	48				
LMF 20ML	5	20	32	0	80	54			
LMF 25ML	6	25	40	0 -0.019	112	0	62		
LMF 30ML	6	30	45		123	-0.4	74		

Notes: Since this model contains a synthetic resin retainer, do not use it at temperatures exceeding 80°C.
If requiring a type equipped with a seal, indicate it when placing an order.

(Example) LMF13ML UU

└── Seal attached on both ends of the nut



Unit: mm

	H	PCD	Mounting hole d ₁ × d ₂ × h	Flange perpendicularity	Eccentricity (max)	Basic load rating		Mass g
				μm	μm	C N	C ₀ N	
	5	20	3.4 × 6.5 × 3.3	15	15	324	529	29
	5	24	3.4 × 6.5 × 3.3	15	15	431	784	45
	6	29	4.5 × 8 × 4.4	15	15	588	1,100	81
	6	32	4.5 × 8 × 4.4	15	15	657	1,200	93
	6	33	4.5 × 8 × 4.4	15	15	814	1,570	115
	6	38	4.5 × 8 × 4.4	15	15	1,230	2,350	194
	8	43	5.5 × 9.2 × 5.4	20	20	1,400	2,750	250
	8	51	5.5 × 9.2 × 5.4	20	20	1,560	3,140	500
	10	60	6.6 × 11 × 6.5	20	20	2,490	5,490	646

Notes: Since the nut and the balls use stainless steel, these models are highly resistant to corrosion and environment.
If a lubrication hole is required, this can be indicated by appending "OH" to the end of the model number.
For further information, contact THK.