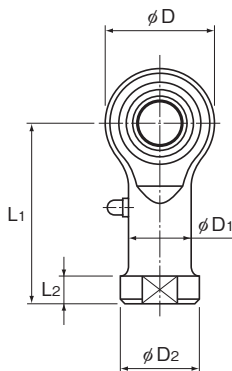


## Model PHS (Female Threading Type)



Model No.	Outer dimensions			Threaded S <sub>1</sub> JIS Class 2	Holder Dimensions			
	Length L	Diameter D	Width B <sub>1</sub> 0 -0.1		W 0 -0.2	D <sub>1</sub>	D <sub>2</sub>	B ±0.1
PHS 5	35	16	8	M5×0.8	9	9	11	6
PHS 6	39	18	9	M6×1	11	10	13	6.75
PHS 8	47	22	12	M8×1.25	14	12.5	16	9
PHS 10	56	26	14	M10×1.5	17	15	19	10.5
PHS 12	65	30	16	M12×1.75	19	17.5	22	12
PHS 14	74	34	19	M14×2	22	20	25	13.5
PHS 16	83	38	21	M16×2	22	22	27	15
PHS 18	92	42	23	M18×1.5	27	25	31	16.5
PHS 20	100	46	25	M20×1.5	30	27.5	34	18
PHS 22	109	50	28	M22×1.5	32	30	37	20
PHS 25	124	60	31	M24×2	36	33.5	42	22
PHS 30	145	70	37	M30×2	41	40	50	25

### [Material]

Holder : S35C (Chromate treatment)  
 Spherical inner ring : SUJ2, 58 HRC or higher  
 ( Hard chrome plated except for the inner surface of the inner ring )

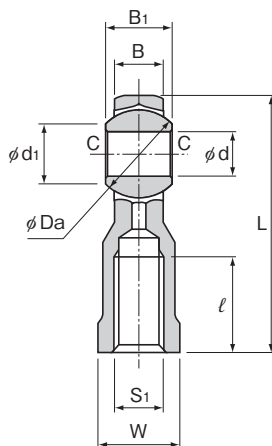
Bush : copper alloy

### [Fitting with the Shaft]

Condition	Dimensional tolerance of the shaft
Normal load	h7
Indeterminate load	p6

### Model number coding

**PHS10 L**  
 Model number | Left-hand thread



Unit: mm

				Grease nipple	Spherical inner ring dimensions				Permissible tilt angles			Static applied load Radial	Mass	
L <sub>1</sub>	L <sub>2</sub>	ℓ	d		Ball diameter Da mm (inch)	d <sub>1</sub>	C	α <sub>1</sub> °	α <sub>2</sub> °	α <sub>3</sub> °	C <sub>s</sub>			
			H7								N	g		
	27	4	14	PB107	5	11.112(7/16)	7.7	0.3	8	13	30	5590	16.5	
	30	5	14		6	12.7(1/2)	9	0.3	8	13	30	6860	25	
	36	5	17		8	15.875(5/8)	10.4	0.5	8	14	25	9800	43	
	43	6.5	21		10	19.05(3/4)	12.9	0.5	8	14	25	13200	72	
	50	6.5	24		12	22.225(7/8)	15.4	0.5	8	13	25	16700	107	
	57	8	27		14	25.4(1)	16.9	0.7	10	16	24	20600	160	
	64	8	33		16	28.575(1 1/8)	19.4	0.7	9	15	24	25000	210	
	71	10	36		18	31.75(1 1/4)	21.9	0.7	9	15	24	29400	295	
	77	10	40		20	34.925(1 3/8)	24.4	0.7	9	15	24	34300	380	
	84	12	43		22	38.1(1 1/2)	25.8	0.7	10	15	23	41200	490	
	94	12	48		A-M6F	25	42.862(1 11/16)	29.6	0.8	9	15	23	72500	750
	110	15	56			30	50.8(2)	34.8	0.8	10	17	23	92200	1130

**[Clearance]**

Unit: mm

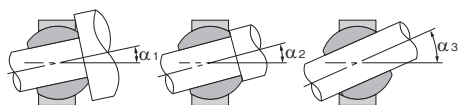
Radial clearance	0.035 or less
Axial clearance	0.1 or less

**[Lubrication]**

Apply lubricant before using the product. The holder has a lubrication hole and an oil groove; they allow grease to be replenished through the grease nipple as necessary.

**[Identification of Left-hand Thread]**

If the female threading is left-hand, symbol "L" is added. The actual product is marked with symbol "L" on the holder.



Permissible Tilt Angles