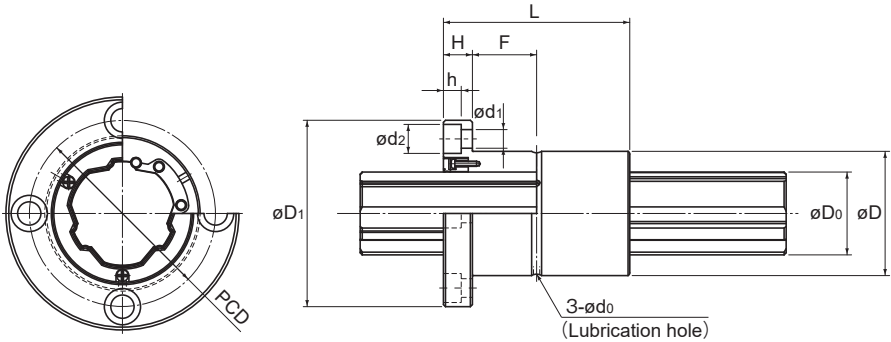


Model SLF



Model No.	Spline nut dimensions									
	Outer diameter		Length		Flange diameter		H	F	Lubrication hole d_0	PCD
	D	Tolerance	L	Tolerance	D_1	Tolerance				
SLF25	37	0	60	0 -0.3	60	0 -0.2	9	21	2	47
SLF30	45	-0.016	70		70		10	25	3	54
SLF40	60	0 -0.019	90		90		14	31	3	72
SLF50	75		100		113	0 -0.3	16	34	4	91
SLF60	90		127		129		18	45.5	4	107
SLF70	100	110	142		20		35	4	117	
SLF80	120	0 -0.022	140	168	22		48	5	138	
SLF100	140	0 -0.025	160	0 -0.4	195	0 -0.4	25	55	5	162

Model number coding

2 SLF50 UU CL +700L P K

Model No.

Symbol for clearance
in the rotational direction²

Symbol for standard hollow spline shaft⁴

Accuracy symbol³

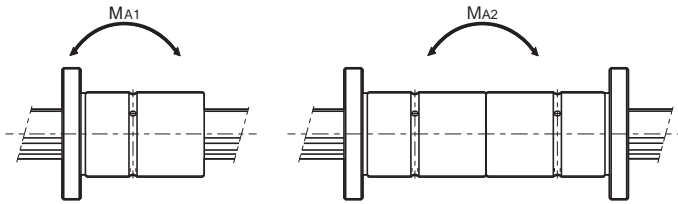
Contamination protection
accessory symbol¹

Overall spline shaft length⁵
(in mm)

Number of spline nuts on one shaft (no symbol for one nut)

¹ See **A3-128**. ² See **A3-32**. ³ See **A3-37**. ⁴ See **A3-50**. ⁵ See **A3-123**.

High-Torque Caged Ball Ball Spline



Unit: mm

	Mounting hole $d_1 \times d_2 \times h$	Basic torque rating		Basic load rating		Static permissible moment		Mass	
		C_T N·m	C_{OT} N·m	C kN	C_0 kN	M_{A1} N·m	M_{A2} N·m	Spline nut kg	Spline shaft kg/m
	5.5×9.5×5.4	219.9	306.8	18.2	22.5	136	851	0.26	3.51
	6.6×11×6.5	366.5	513.3	25.4	31.5	233	1,341	0.45	5.05
	9×14×8.6	818.9	1,135.4	42.8	52.5	520	2,801	1.06	9.18
	11×17.5×11	1,373.4	1,783.1	57.6	66.2	687	4,156	1.9	14.45
	11×17.5×11	2,506.7	3,321	87.8	103	1,452	7,733	3.08	21.23
	14×20×13	2,986.3	3,474.7	89.7	92.5	1,038	6,392	3.25	28.57
	16×23×15.2	4,664.6	5,477.4	122.8	127.7	1,739	11,482	5.82	37.49
	18×26×17.5	8,922.3	10,211.6	188.2	190.7	3,155	19,118	7.66	58.97