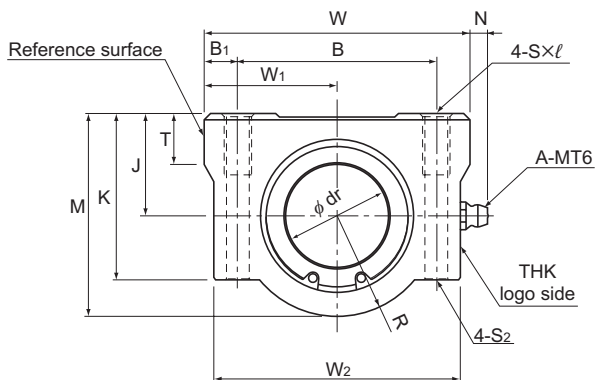


Model SL



Model SL

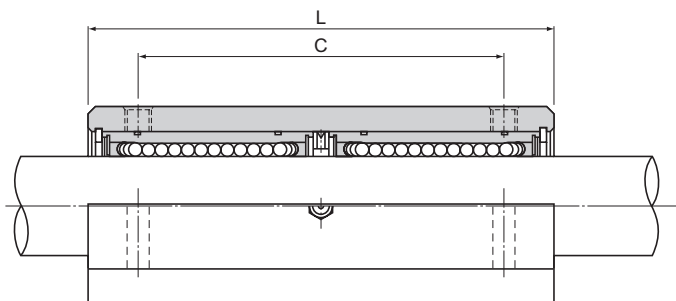
Model No.	Outer dimensions			LM casing dimensions						
	Height M	Width W	Length L	Mounting hole position			Tap S × l	Through bolt model No., S ₂	Center height J ±0.02	W ₁ ±0.02
				B	B ₁	C				
SL 6UU	18	30	48	20	5	36	M4 × 8	M3	9	15
SL 8UU	22	34	58	24	5	42	M4 × 8	M3	11	17
SL 10UU	26	40	68	28	6	46	M5 × 12	M4	13	20
SL 12UU	29	42	70	30.5	5.75	50	M5 × 12	M4	15	21
SL 13UU	30	44	75	33	5.5	50	M5 × 12	M4	15	22
SL 16UU	38.5	50	85	36	7	60	M5 × 12	M4	19	25
SL 20UU	42	54	96	40	7	70	M6 × 12	M5	21	27
SL 25UU	51.5	76	130	54	11	100	M8 × 18	M6	26	38
SL 30UU	59.5	78	140	58	10	110	M8 × 18	M6	30	39

Notes: Since this model contains a synthetic resin retainer, do not use it at temperatures exceeding 80°C.

A highly corrosion resistant stainless steel Linear Bushing Model LM-MG can also be incorporated at your request.

Example of Model Numbers for Use in Combination with
Linear Bushing Units

Linear bushing to be combined	Example of model No.	
With seals on both ends	SL 13UU	Standard stock
Without seals	SL 13	Made to order
Made of stainless steel with seals on both ends	SL 13MUU	Made to order



Unit: mm

	K	W ₂	T	R	N	Inscribed circle diameter		Model No. of linear bushing to be combined	Basic load rating		Unit
						dr	Tolerance		C	C ₀	mass
											N
	15	28	6	9	7	6	0 -0.009	LM6U	324	529	68
	18	32	6	11	7	8		LM8U	431	784	105
	22	37	8	13	7	10		LM10U	588	1,100	185
	25	39	8	14	6.5	12		LM12U	657	1,200	205
	26	41	8	15	6.5	13		LM13U	814	1,570	242
	35	46	9	19.5	6	16		LM16U	1,230	2,350	403
	36	52	11	21	7	20	0 -0.010	LM20U	1,400	2,750	520
	41	68	12	25.5	4	25		LM25U	1,560	3,140	1,120
	49	72	15	29.5	5	30		LM30U	2,490	5,490	1,440