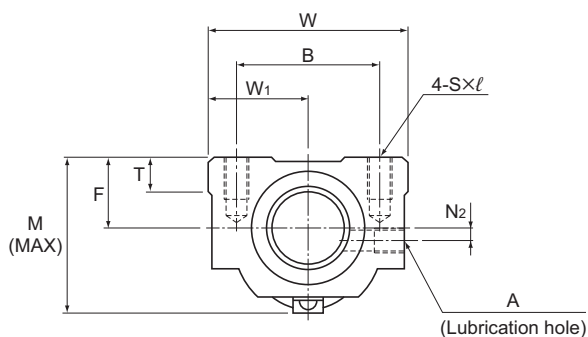
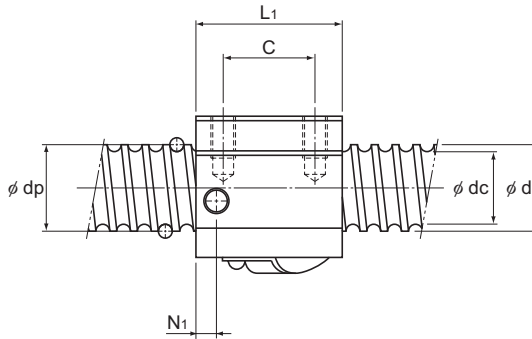


BNT No Preload

DN value	70,000
----------	--------



Model No.	Screw shaft outer diameter d	Lead Ph	Ball center-to-center diameter dp	Thread minor diameter dc	No. of loaded circuits Rows × turns	Basic load rating		Rigidity K N/μm
						Ca kN	C _{0a} kN	
BNT 1404-3.6	14	4	14.4	11.5	1×3.65	6.8	12.6	190
BNT 1405-2.6	14	5	14.5	11.2	1×2.65	7.2	12.6	150
BNT 1605-2.6	16	5	16.75	13.5	1×2.65	7.8	14.7	170
BNT 1808-3.6	18	8	19.3	14.4	1×3.65	18.2	34.4	270
BNT 2005-2.6	20	5	20.5	17.2	1×2.65	8.7	18.3	200
BNT 2010-2.6	20	10	21.25	16.4	1×2.65	14.7	27.8	220
BNT 2505-2.6	25	5	25.5	22.2	1×2.65	9.6	23	240
BNT 2510-5.3	25	10	26.8	20.2	2×2.65	43.4	92.8	520
BNT 2806-2.6	28	6	28.5	25.2	1×2.65	10.1	25.8	270
BNT 2806-5.3	28	6	28.5	25.2	2×2.65	18.3	51.6	510
BNT 3210-2.6	32	10	33.75	27.2	1×2.65	27.3	59.5	330
BNT 3210-5.3	32	10	33.75	27.2	2×2.65	49.6	118.9	640
BNT 3610-2.6	36	10	37	30.5	1×2.65	28.7	65.6	360
BNT 3610-5.3	36	10	37	30.5	2×2.65	52.1	131.2	700
BNT 4512-5.3	45	12	46.5	39.2	2×2.65	68.1	186.7	860



Unit: mm

	Nut dimensions											Screw shaft inertial moment/mm ³	Nut mass	Shaft mass	Permissible rotational speed	
	Width	Center height	Overall length	Mounting hole			W ₁	T	M	N ₁	N ₂					Lubrication hole
	W	F	L ₁	B	C	S × ℓ										
	34	13	35	26	22	M4 × 7	17	6	30	6	2	M6	2.96×10^{-8}	0.15	0.93	4,860
	34	13	35	26	22	M4 × 7	17	6	31	6	2	M6	2.96×10^{-8}	0.15	0.92	4,820
	42	16	36	32	22	M5 × 8	21	21.5	32.5	6	2	M6	5.05×10^{-8}	0.3	1.24	4,170
	48	17	56	35	35	M6 × 10	24	10	44	8	3	M6	8.09×10^{-8}	0.47	1.46	3,620
	48	17	35	35	22	M6 × 10	24	9	39	5	3	M6	1.23×10^{-7}	0.28	2.06	3,410
	48	18	58	35	35	M6 × 10	24	9	46	10	2	M6	1.23×10^{-7}	0.5	1.99	3,290
	60	20	35	40	22	M8 × 12	30	9.5	45	7	5	M6	3.01×10^{-7}	0.41	3.35	2,740
	60	23	94	40	60	M8 × 12	30	10	55	10	—	M6	3.01×10^{-7}	1.18	2.79	2,610
	60	22	42	40	18	M8 × 12	30	10	50	8	—	M6	4.74×10^{-7}	0.81	4.42	2,450
	60	22	67	40	40	M8 × 12	30	10	50	8	—	M6	4.74×10^{-7}	0.78	4.42	2,450
	70	26	64	50	45	M8 × 12	35	12	62	10	—	M6	8.08×10^{-7}	1.3	4.98	2,070
	70	26	94	50	60	M8 × 12	35	12	62	10	—	M6	8.08×10^{-7}	2	4.98	2,070
	86	29	64	60	45	M10 × 16	43	17	67	11	—	M6	1.29×10^{-6}	1.8	6.54	1,890
	86	29	96	60	60	M10 × 16	43	17	67	11	—	M6	1.29×10^{-6}	2.4	6.54	1,890
	100	36	115	75	75	M12 × 20	50	20.5	80	13	—	M6	3.16×10^{-6}	4.1	10.56	1,500

Notes: The Model BNT can be equipped with a brush seal depending on the model number. Contact THK if you would like to use one.

The overall length of the nut will increase when equipping the QZ Lubricator. See **A15-366** for further details.