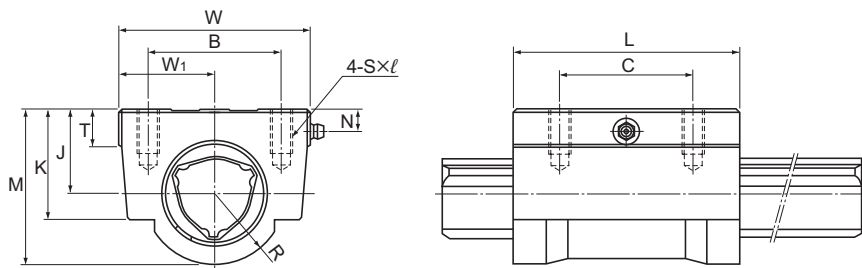


Model LBH



Model No.	Spline nut dimensions									
	Height M	Width W	Length L	B	C	S × l	J ±0.15	W ₁ ±0.15	T	K
○ LBH 15	29	34	43	26	26	M4 × 10	15	17	6	20
○● LBH 20	38	48	62	35	35	M6 × 12	20	24	7	26
○● LBH 25	47	60	73	40	40	M8 × 16	25	30	9.8	32.4
○● LBH 30	56	70	83	50	50	M8 × 16	30	35	11.8	38.6
○● LBH 40	70	86	102	60	60	M10 × 20	38	43	15	50
○● LBH 50	88	100	115	75	75	M12 × 25	48	50	18	63

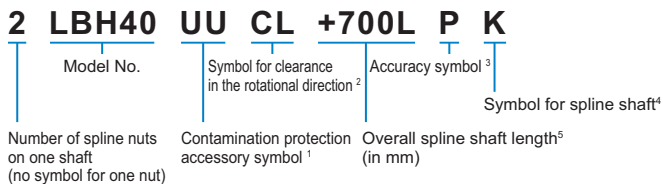
○: Indicates model numbers able to handle high temperatures (with metal retainers, the operating temperature is up to 100°C).

(Example) LBH30 A CM+600L H

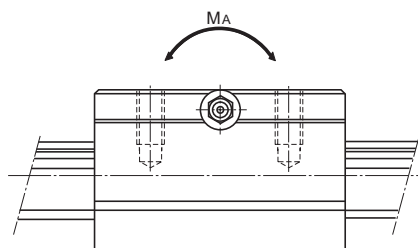
└ High temperature symbol

●: Indicates model numbers for which felt seals are available (see **A3-128**).
A felt seal cannot be attached to ball spline models using metal retainers.

Model number coding



¹ See **A3-128**. ² See **A3-32**. ³ See **A3-37**. ⁴ See **A3-71**. ⁵ See **A3-123**.



Unit: mm

				Basic torque rating		Basic load rating (radial)		Static permissible moment	Mass	
R	N	Grease nipple	C _T N·m	C _{OT} N·m	C kN	C ₀ kN	M _A ¹ N·m		Spline nut kg	Spline shaft kg/m
14	5	ø4 drive Nipple	30.4	74.5	4.4	8.4	25.4	0.23	1	
18	7	A-M6F	90.2	213	9.4	20.1	103	0.58	1.8	
22	6	A-M6F	176	381	14.9	28.7	171	1.1	2.7	
26	8	A-M6F	312	657	22.5	41.4	295	1.73	3.8	
32	10	A-M6F	696	1,420	37.1	66.9	586	3.18	6.8	
40	13.5	A-PT1/8	1,290	2,500	55.1	94.1	941	5.1	10.6	

¹ M_A indicates the permissible moment value in the axial direction when a single spline nut is used, as shown in the figure above.

Note: For details on the maximum lengths of ball spline shafts by accuracy, please see **A3-123**.