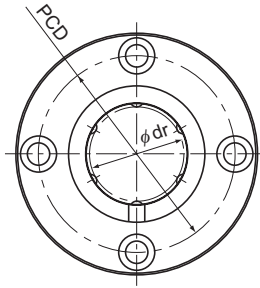


Model LMF-M (Stainless Steel Type)



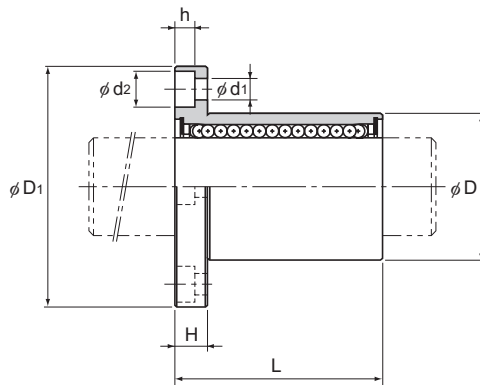
Model LMF-M

Model No.	Ball rows	Main dimensions							
		Inscribed circle diameter		Outer diameter		Length		Flange diameter	
		dr	Tolerance	D	Tolerance	L	Tolerance	D _f	Tolerance
LMF 6M	4	6	0 -0.009	12	0 -0.011	19	0 -0.2	28	0 -0.2
LMF 8SM	4	8		15		17		32	
LMF 8M	4	8		15	24	32			
LMF 10M	4	10		19	29	39			
LMF 12M	4	12	21	0 -0.013	30	42			
LMF 13M	4	13	23	32	43				
LMF 16M	5	16	28	37	48				
LMF 20M	5	20	32	0 -0.016	42	54			
LMF 25M	6	25	40	59	0 -0.3	62			
LMF 30M	6	30	45	64	74				

Notes: Since this model contains a synthetic resin retainer, do not use it at temperatures exceeding 80°C.
If requiring a type equipped with a seal, indicate it when placing an order.

(Example) LMF20M UU

└── Seal attached on both ends of the nut



Unit: mm

	H	PCD	Mounting hole d ₁ × d ₂ × h	Flange perpendicularity	Eccentricity (max)	Basic load rating		Mass g
				μm	μm	C N	C ₀ N	
	5	20	3.4 × 6.5 × 3.3	12	12	206	265	23
	5	24	3.4 × 6.5 × 3.3	12	12	176	225	29
	5	24	3.4 × 6.5 × 3.3	12	12	265	402	33
	6	29	4.5 × 8 × 4.4	12	12	373	549	59
	6	32	4.5 × 8 × 4.4	12	12	412	598	68
	6	33	4.5 × 8 × 4.4	12	12	510	775	80
	6	38	4.5 × 8 × 4.4	12	12	775	1,180	126
	8	43	5.5 × 9.2 × 5.4	15	15	863	1,370	160
	8	51	5.5 × 9.2 × 5.4	15	15	980	1,570	305
	10	60	6.6 × 11 × 6.5	15	15	1,570	2,750	422

Notes: Since the nut and the balls use stainless steel, these models are highly resistant to corrosion and environment.
If a lubrication hole is required, this can be indicated by appending "OH" to the end of the model number.
For further information, contact THK.