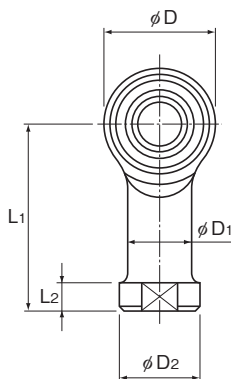


## Model NHS-T (No Lubrication Type)



Model No.	Outer dimensions			Threaded S <sub>1</sub> JIS Class 2	Holder Dimensions			
	Length L	Diameter D	Width B <sub>1</sub> 0 -0.1		W 0 -0.2	D <sub>1</sub>	D <sub>2</sub>	B +0.1 -0.4
NHS 3T	27	12	6	M3×0.5	7	6.5	8	4.5
NHS 4T	31	14	7	M4×0.7	8	8	9.5	5.3
NHS 5T	35	16	8	M5×0.8	9	9	11	6
NHS 6T	39	18	9	M6×1	11	10	13	6.75
NHS 8T	47	22	12	M8×1.25	14	12.5	16	9
NHS 10T	56	26	14	M10×1.5	17	15	19	10.5
NHS 12T	65	30	16	M12×1.75	19	17.5	22	12
NHS 14T	74	34	19	M14×2	22	20	25	13.5
NHS 16T	83	38	21	M16×2	22	22	27	15
NHS 18T	92	42	23	M18×1.5	27	25	31	16.5
NHS 20T	100	46	25	M20×1.5	30	27.5	34	18
NHS 22T	109	50	28	M22×1.5	32	30	37	20

### [Material]

Holder : S35C (Chromate treatment)  
For NHS3T and NHS4T, S20C  
Spherical inner ring: SUJ2, 58 HRC or higher  
( Hard chrome plated except for the  
inner surface of the inner ring )  
Bush : Self-lubricating synthetic resin

### [Fitting with the Shaft]

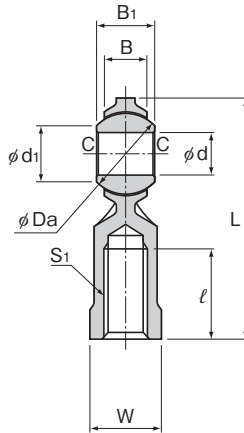
Condition	Dimensional tolerance of the shaft
Normal load	h7
Indeterminate load	p6

### Model number coding

**NHS10T L**

Model number

Left-hand thread



Unit: mm

				Spherical inner ring dimensions				Permissible tilt angles			Static applied load Radial C <sub>s</sub> N	Mass g
L <sub>1</sub>	L <sub>2</sub>	l	d H7	Ball diameter Da mm (inch)	d <sub>1</sub>	C	α <sub>1</sub> °	α <sub>2</sub> °	α <sub>3</sub> °			
21	3	10	3	9.525 <sup>(3/8)</sup>	7.4	0.3	8	10	42	1570	6.5	
24	4	12	4	10.319 <sup>(13/32)</sup>	7.6	0.3	9	11	35	2250	10	
27	4	14	5	11.112 <sup>(7/16)</sup>	7.7	0.3	8	13	30	3920	16.5	
30	5	14	6	12.7 <sup>(1/2)</sup>	9	0.3	8	13	30	5000	25	
36	5	17	8	15.875 <sup>(5/8)</sup>	10.4	0.5	8	14	25	7450	43	
43	6.5	21	10	19.05 <sup>(3/4)</sup>	12.9	0.5	8	14	25	9410	72	
50	6.5	24	12	22.225 <sup>(7/8)</sup>	15.4	0.5	8	13	25	11000	107	
57	8	27	14	25.4 <sup>(1)</sup>	16.9	0.7	10	16	24	15200	160	
64	8	33	16	28.575 <sup>(1 1/8)</sup>	19.4	0.7	9	15	24	20200	210	
71	10	36	18	31.75 <sup>(1 1/4)</sup>	21.9	0.7	9	15	24	25200	295	
77	10	40	20	34.925 <sup>(1 3/8)</sup>	24.4	0.7	9	15	24	27800	380	
84	12	43	22	38.1 <sup>(1 1/2)</sup>	25.8	0.7	10	15	23	35900	490	

**[Clearance]**

Unit: mm

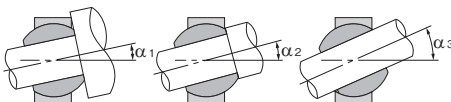
Radial clearance	0.035 or less
Axial clearance	0.1 or less

**[Initial Lubrication]**

This model can be used without lubrication. However, if desiring to provide initial lubrication, apply oil or grease to the spherical area.

**[Identification of Left-hand Thread]**

If the female threading is left-hand, symbol "L" is added. The actual product is marked with symbol "L" on the holder.



Permissible Tilt Angles