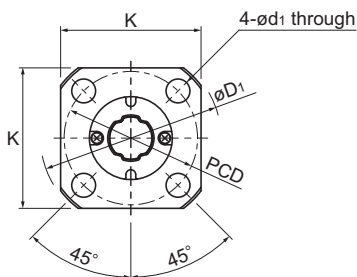


Model LFK-X



Models LFK5X to 8X

Model No.	Spline shaft diameter		Spline nut dimensions											
	D ₀ h7	Outer diameter		Length			Flange outer diameter		H	F	E	E ₁	Lubrication hole d ₀	PCD
		D	Tolerance	L (With seal)	L ₁ (Without seal)	L ₂	D ₁	K						
LFK 5X LFK 5XL	5	10	0 -0.009	15 26	13.6 24.6	7.3 18.3	23	18	2.7	— 6.5	6.55	5.35	— 1	17
LFK 6X LFK 6XL	6	12	0 -0.011	19 30	17.6 28.6	10.2 21.2	25	20	2.7	2.4 7.9	7.1	5.9	1	19
LFK 8X LFK 8XL	8	15	0 -0.011	25 40	23.8 38.8	14.6 29.6	28	22	3.8	3.5 11	9	7.5	1.5	22
LFK 10X	10	19	0 -0.013	33	30.8	23.9	38	30	6	5.95	10.55	9.45	1.5	28
LFK 13X	13	23	0 -0.013	36	32.4	24	43	34	6	6	12	10.2	1.5	33
LFK 16X	16	28	0 -0.013	50	46.4	35.5	48	37	6	11.7	13.3	11.5	2	38
LFK 20X	20	32	0 -0.016	63	59	47.4	54	42	8	15.7	15.8	13.8	2	43
LFK 25X	25	40	0 -0.016	71	67	52.6	62	50	8	18.3	17.2	15.2	3	51
LFK 30X	30	45	0 -0.016	80	75.6	59.6	74	58	10	19.8	20.2	18	3	60

Model number coding

2 LFK20X UU CL +700L P K

Model No.
Number of spline nuts
on one shaft
(no symbol for one nut)

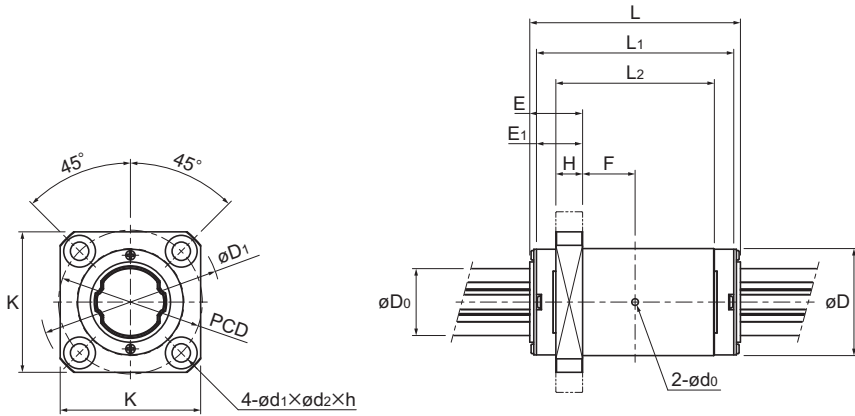
Symbol for clearance
in the rotational direction²
Contamination protection
accessory symbol¹

Accuracy
symbol³
Overall spline shaft length⁵
(in mm)

Symbol for spline shaft⁴

¹ See **A3-128**. ² See **A3-32**. ³ See **A3-37**. ⁴ See **A3-95**. ⁵ See **A3-123**.

Medium-Torque Ball Spline



Models LFK10X to 30X

Unit: mm

Mounting hole $d_1 \times d_2 \times h$		Basic torque rating		Basic load rating		Static permissible moment			Mass	
		C_T N·m	C_{0T} N·m	C kN	C_0 kN	M_{A1} N·m	M_{A2} (With seal) N·m	M_{A2} (Without seal) N·m	Spline nut g	Spline shaft kg/m
3.4 through		0.82 1.59	1.25 3.2	0.56 1.09	0.85 2.19	1.04 6.11	8.2 35.5	6.6 28.4	7.9 12.6	0.15
3.4 through		1.73 2.81	2.77 5.54	0.98 1.6	1.58 3.15	2.85 10.6	19 59.8	15.2 47.8	11.6 18.3	0.21
3.4 through		6 10.1	9.23 19.5	1.39 2.35	2.15 4.53	5.13 21.1	34.3 110.9	27.4 88.7	22.3 32.3	0.38
4.5×8×4.4		9.41	17.3	2.94	5.4	21.5	114	104	54	0.59
4.5×8×4.4		17.1	28.7	4.16	6.96	28.9	164	149	67	1.01
4.5×8×4.4		42.9	68.6	8.4	13.4	77.4	419	381	110	1.52
5.5×9.5×5.4		66.4	117	10.5	18.6	144	735	669	177	2.41
5.5×9.5×5.4		125	207	15.9	26.2	230	1,183	1,077	298	3.71
6.6×11×6.5		196	319	20.8	34	335	1,714	1,560	411	5.37

Notes: The mass of the spline nut does not include the seal.
Please check the spline shaft strength tests (A3-12) before use.