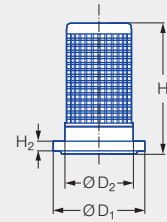
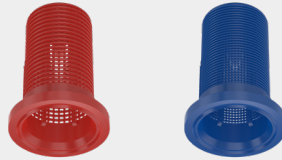


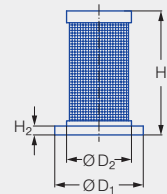


## Filter



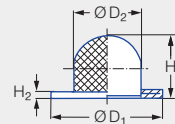
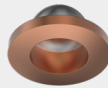
Series	Nozzle size	Ordering no.		Colour	Dimensions [mm]					Weight [g]
		Type	Mat. no.		Mesh size	H <sub>1</sub>	H <sub>2</sub>	Ø D <sub>1</sub>	Ø D <sub>2</sub>	
216/2TR/ 302/468/ 422 bayonet/ 652/646/684	xxx.32x-xxx.44x	<b>065.257</b>	● 56 POM	Blue	0.3	21.4	2.0	14.8	11.0	2.0
	xxx.48x-xxx.56x	<b>065.256</b>	●	Red	0.5	21.4	2.0	14.8	11.0	2.0

## Filter



Series	Nozzle size	Ordering no.		Colour	Dimensions [mm]					Weight [g]
		Type	Mat. no.		Mesh size	H <sub>1</sub>	H <sub>2</sub>	Ø D <sub>1</sub>	Ø D <sub>2</sub>	
216/2TR/ 302/468/ 422 bayonet/ 652/646/684	xxx.14x-xxx.36x	<b>095.016.53.15.62</b>	● 53 Polypropylene	Light pink	0.08	21.00	1.60	15.00	11.00	1.00

## Cup strainer



Series	Nozzle size	Ordering no.		Mesh size	Dimensions [mm]				Weight [g]
		Type	Mat. no.		H <sub>1</sub>	H <sub>2</sub>	Ø D <sub>1</sub>	Ø D <sub>2</sub>	
216/2TR/ 302/468/ 422 bayonet/ 652/646/684	xxx.32x-xxx.44x	<b>065.252</b>	● 26 Monel/Copper	0.5	8.5	1.6	14.8	9.0	1.0

Ordering Type + Material no. = Ordering no.  
example: 065.257 + 56 = 065.257.56